



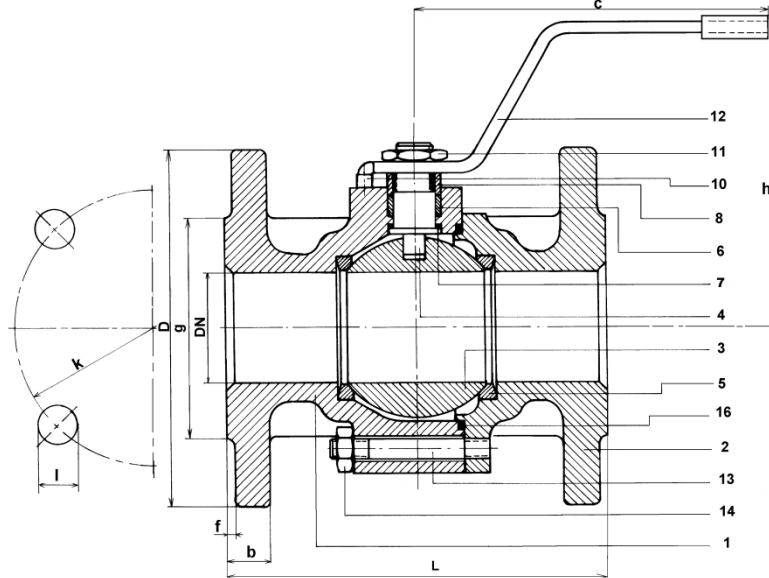
 **VALFTEK** 

**Short Pattern Ball Valves**

# Ball Valves (Short Pattern)

**VALFTEK®**

<b>Model</b>	: VKS
<b>Pressure Rating</b>	: PN10-16
<b>Operating Temperature</b>	: +200 C <sup>0</sup> (max.)
<b>Connection</b>	: Flanged (TS EN 1092-2)
<b>Dimensions</b>	: TS EN 558 (PN10-16 TS 3148)
<b>Applications</b>	: Water, Hot water, Compressed air, etc



## FULL BORE VALVE DIMENSIONS PN10-16

Size	Valve Dimensions			Flange dimensions								Weight
				PN10-16								
DN	L	h	c	D	b	k	l	n	g	f	Kg	
40	140	110	160	150	18	110	19	4	84	3	6,4	
50	150	117	200	165	20	125	19	4	99	3	9,5	
65	170	130	200	185	20	145	19	4	118	3	13,3	
80	180	156	285	200	22	160	19	8	132	3	19,0	
100	190	166	285	220	22	180	19	8	156	3	24,7	
125	325	201	660	250	24	210	19	8	184	3	50,3	

n: The number of flange holes, dimensions are in mm.  
We reserve the right to modify construction and material without notice.

Part No / Name	Material
1-Body	JL1040 Cast iron (GG-25)
2-End cap	JL1040 Cast iron (GG-25)
3-Ball	1.4021/1.4086 S.Steel
4-Operating stem	1.4104 S.Steel
5-Seat ring	PTFE
6-Packing ring	PTFE
7-Thrust washer	PTFE
8-Packing gland	St.37 Gal
10- Retaining pin	St 37 Gal
11-Nut	5
12- Handle	St.37
13- Stud bolt (*)	5.6
14-Nut (*)	5
16- Insert seal	PTFE

(\*) For DN125 valves, bolts (8.8) are used

- ❖ Stainless steel Solid Ball
- ❖ Full Bore
- ❖ The same F/F dimensions as gate valves
- ❖ Hot water systems for pump application

**EAC**

**BUREAU  
VERTAS**

**TSE**

## VALFTEK® Valf Teknik Tesisat Elemanları Sanayi ve Ticaret A.Ş

Headquarters & Factory : Sarımeşe Mah. Suadiye Cd. No:19 41250 Kartepe KOCAELİ Tel: 0 (262) 371 61 62 (Pbx) Fax: 0 (262) 371 61 72

email:valftek@valftek.com.tr

İstanbul Office Marketing & Sales: Şerifali mah. Turcan cad. 55/6 34775 Ümraniye İSTANBUL Tel:0 (216) 415 40 20 Fax:0 (216) 415 40 21

Ankara Bölge: Tel:0 (312) 311 50 61 Adana Bölge Tel:0 (322) 363 28 14 İzmir Bölge Tel:0 (232) 458 06 82

Bursa Bölge GSM:0 (533) 629 97 75 Trakya Bölge GSM:0 (533) 315 70 85

www.valftek.com.tr