



 **VALFTEK**®

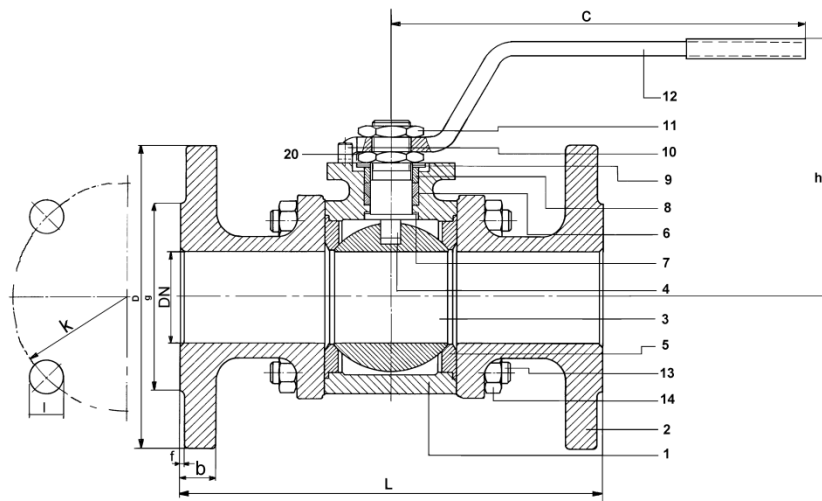
**BALL VALVES**

**For Flammable Gases (TS EN 331- TS 9809)**

# Ball Valves ( For flammable gases )



- Model** : VKV (Full bore)
- Pressure rating** : MOP 5-20 (\*) (DN15-50) (TS EN 331)
- Connections** : Flanged (TS EN 1092-2)
- Dimensions** : Acc. to TS EN 558+A1
- Applications** : Flammable gases (Natural gas, LPG, LNG)



Part No / Name	Material
1-Body	JS 1049 (GGG-40.3)
2-End cap	JS 1049 (GGG-40.3)
3-Ball	1.4021 / 1.4086 / 1.4301 St.Steel
4-Stem	1.4104 St. steel
5-Seat Ring	PTFE
6-Packing Ring	PTFE
7-Thrust Washer	PTFE
8-Packing Gland	St 37
9-Belleville Washer	Ck70
10-Retaining Pin	St 37
11-Handle Nut	5
12-Handle	St 42
13-Stud Bolt	5.6
14-Nut	5
20- Security Washer	St 37

\*) DN 15-25 Ball material are AISI 304 St.Steel

## FULL BORE - DIMENSIONS

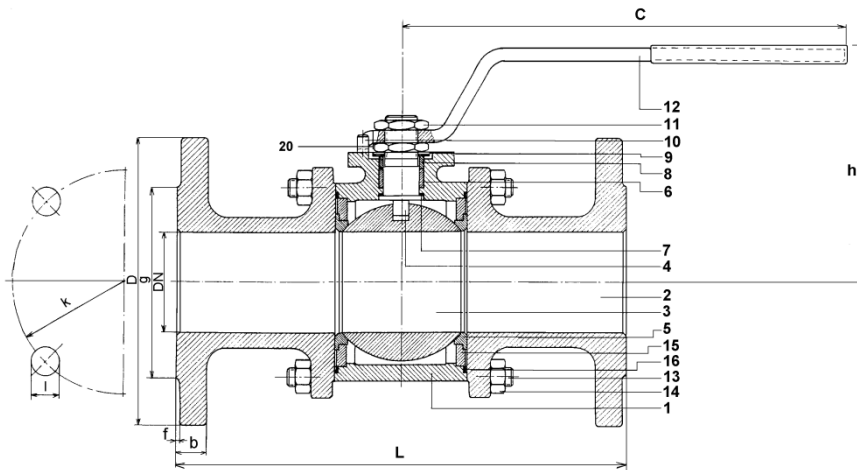
Size	Dimensions			Flange dimensions								Weight
				PN40								
DN	L	h	c	D	b	k	l	n	g	f	Kg	
15	130	85	135	95	16	65	14	4	46	2	2,60	
20	150	95	160	105	18	75	14	4	56	2	3,50	
25	160	100	160	115	18	85	14	4	65	3	4,50	
32	180	128	200	140	18	100	19	4	76	3	6,60	
40	200	135	200	150	18	110	19	4	84	3	8,20	
50	230	139	285	165	20	125	19	4	99	3	11,30	

(\*) Valves from DN15 to DN50 have been designed acc. to PN40 rating, however they are limited to and marked as MOP5-20 acc. to TS-EN 331 standard.

# Ball Valves ( For flammable gases )



- Model** : VKV (Full bore)
- Pressure rating** : PN40 (DN65-DN100) (TS 9809)
- Connections** : Flanged (TS EN1092-2)
- Dimensions** : Acc. to TS 9809 and TS EN 558+A1
- Applications** : Flammable gases (Natural gas, LPG, LNG)



Part No / Name	Material
1-Body	JS 1049 (GGG-40.3)
2-End cap	JS 1049 (GGG-40.3)
3-Ball	1.4021/1.4086 St. Steel
4-Stem	1.4104 St. Steel
5-Seat Ring	PTFE
6-Packing Ring	PTFE
7-Thrust Washer	PTFE
8-Packing Gland	St 37
9-Belleville Washer	Ck70
10-Retaining Pin	St 37
11-Handle Nut	5
12-Handle	St 42
13-Stud Bolt	5.6
14-Nut	5
15-Cushion Plate	JL 1030 (GG-20)
16-Sealing Ring	PTFE
20-Security Washer	St 37

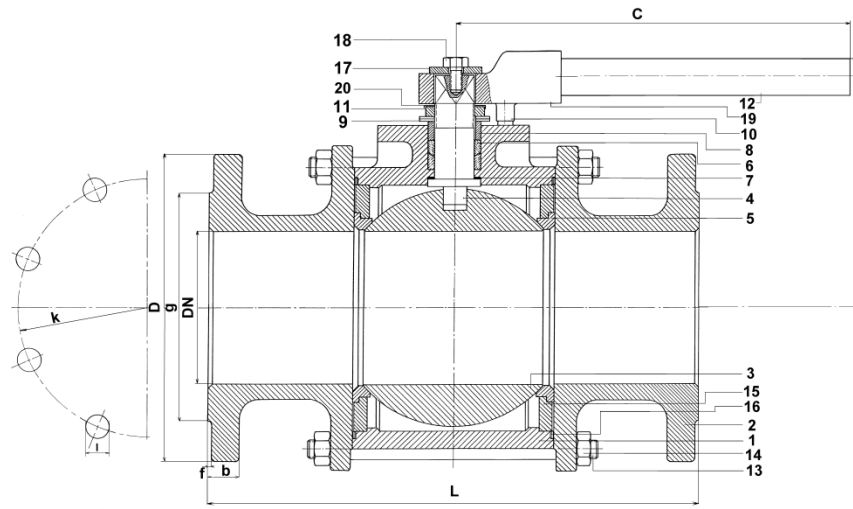
### FULL BORE - DIMENSIONS

Size	Dimensions		Flange dimensions								Weight
			PN40								
DN	L	h	c	D	b	k	l	n	g	f	Kg
65	290	150	285	185	22	145	19	8	118	3	18,0
80	310	178	410	200	24	160	19	8	132	3	25,6
100	350	192	410	235	24	190	23	8	156	3	37,0

# Ball Valves ( For flammable gases )



**Model** : VKV (Full bore)  
**Pressure rating** : PN25 (DN125-DN200) (TS 9809)  
**Connections** : Flanged (TS EN 1092-2)  
**Dimensions** : Acc. to TS 9809 & TS EN 558+A1  
**Applications** : Flammable gases (Natural gas, LPG, LNG)



Part No / Name	Material
1-Body	JS 1049 (GGG-40.3)
2-End cap	JS 1049 (GGG-40.3)
3-Ball	1.4021/1.4086 St. Steel
4-Stem	1.4104 St. Steel
5-Seat Ring	PTFE
6-Packing Ring	PTFE
7-Thrust Washer	PTFE
8-Packing Gland	St 37
9-Belleville Washer	Ck70
10-Retaining Pin	St 37
11-Handle Nut	5
12-Handle	St 42
13-Stud / Bolt	5.6 / 8.8
14-Nut	5
15-Cushion Plate	JL 1030 (GG-20)
16-Sealing Ring	PTFE
17-Washer	St 37
18-Bolt	5.6
19-Handle Adapter	JS 1049 (GGG-40.3)
20-Security Washer	St 37

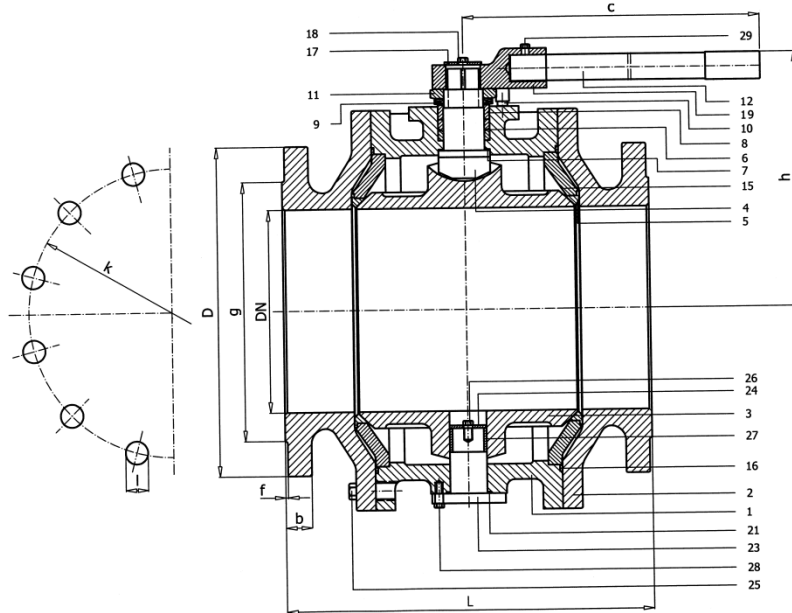
## FULL BORE - DIMENSIONS

Size	Dimensions			Flange dimensions								Weight
				PN25								
DN	L	h	c	D	b	k	l	n	g	f	Kg	
125	400	210	600	270	26	220	28	8	184	3	70,0	
150	450	230	700	300	28	250	28	8	211	3	102,5	
200	550	275	760	360	30	310	28	12	274	3	173,0	

# Ball Valves ( For flammable gases )



- Model** : VKV (Full bore)
- Pressure rating** : PN25 (TS 9809)
- Connections** : Flanged (TS ISO 7005-2, DIN EN 1092-2)
- Dimensions** : Acc. to TS 9809 & TS EN 558+A1
- Applications** : Flammable gases (Natural gas, LPG, LNG)



Part No / Name	Material
1-Body	JS 1049 (GGG-40.3)
2-End cap	JS 1049 (GGG-40.3)
3-Ball	1.4021/1.4086 St. Steel
4-Stem	1.4104 St. Steel
5-Seat Ring	PTFE
6-Packing Ring	PTFE
7-Thrust Washer	PTFE
8-Packing Gland	St 37
9-Belleville Washer	Ck70
10-Retaining Pin	St 37
11-Handle Nut	5
12-Handle	St 42
15-Cushion Plate	JL 1030 (GG 20)
16-Sealing Ring	PTFE
17-Washer	St 37
18-Bolt	5.6
19-Handle Adapter	JS 1049 (GGG-40.3)
21-Gasket	Graphite
23-Lower bearing stem	St 42
24-Washer	St 37
25-Bolt	8.8
26-Bolt	8.8
27-Sleeve ring	PTFE
28-Bolt	5.6
29-Bolt	8.8

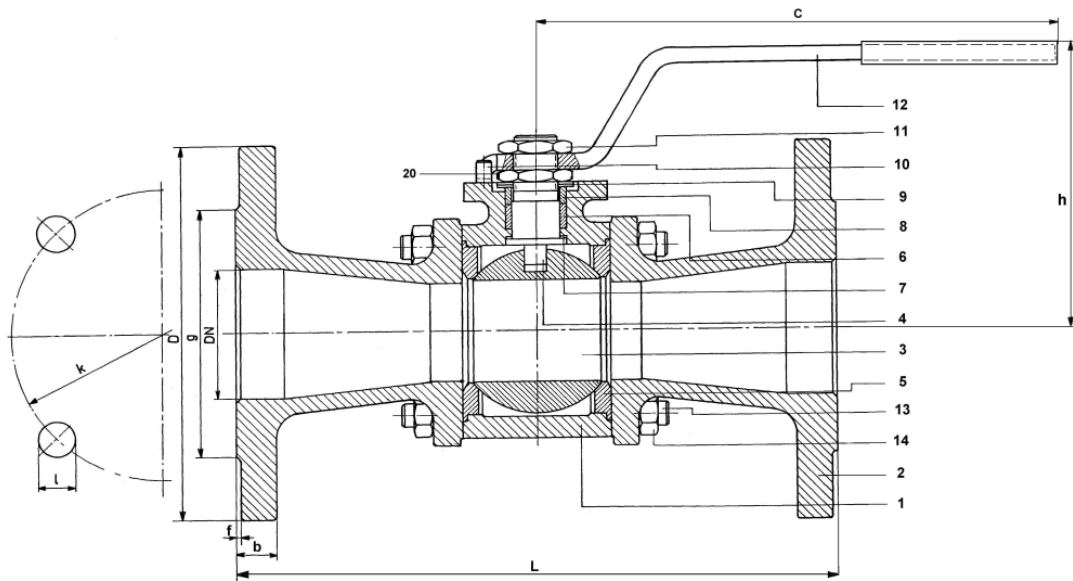
### FULL BORE - DIMENSIONS

Size	Dimensions			Flange dimensions								Weight
				PN25								
DN	L	h	c	D	b	k	l	n	g	f	Kg	
250	650	315	1060	425	32	370	31	12	330	3	275	

# Ball Valves ( For flammable gases )



- Model** : VKV (Reduced bore)
- Pressure rating** : MOP 5-20 (\*\*) (DN15-50) (TS EN 331)
- Connections** : Flanged (TS EN 1092-2)
- Dimensions** : Acc. to TS EN 331 & TS EN 558+A1
- Applications** : Flammable gases (Natural gas, LPG, LNG)



Part No / Name	Material
1-Body	JS 1049 (GGG-40.3)
2-End cap	JS 1049 (GGG-40.3)
3-Ball (*)	1.4021/ 1.4086 /1.4301 St.Steel
4-Stem	1.4104 St. Steel
5-Seat Ring	PTFE
6-Packing Ring	PTFE
7-Thrust Washer	PTFE
8-Packing Gland	St.37
9-Belleville Washer	Ck70
10-Retaining Pin	St 37
11-Handle Nut	5
12-Handle	St 42
13-Stud Bolt	5.6
14-Nut	5
20- Security Washer	St 37

(\*) DN 15-25i Ball material are AISI 304 St.Steel

## REDUCED BORE - DIMENSIONS

Size	Dimensions			Flange dimensions								Weight
				PN40								
DN	L	h	c	D	b	k	l	n	g	f	Kg	
20/15	150	85	135	105	18	75	14	4	56	2	3,1	
25/20	160	95	160	115	18	85	14	4	65	3	4,0	
32/25	180	100	160	140	18	100	19	4	76	3	6,0	
40/32	200	128	200	150	18	110	19	4	84	3	7,3	
50/40	230	135	200	165	20	125	19	4	99	3	10,5	
65/50(*)	290	139	285	185	22	145	19	8	118	3	12,0	

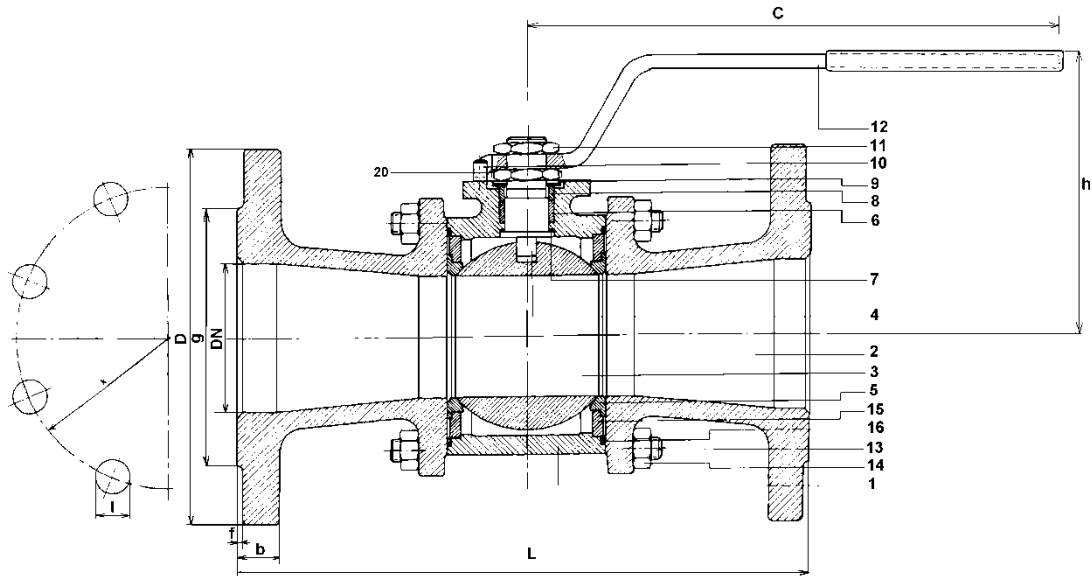
(\*) Acc.to TS 9809, pressure rating is PN40

(\*\*)Valves from DN15 to DN50 have been designed acc. to PN40 rating, however they are limited to and marked as MOP5-20 acc. to TS-EN 331 standard.

# Ball Valves ( For flammable gases )



- Model** : VKV (Reduced bore)
- Pressure rating** : PN40 (DN80-DN125) (TS 9809)
- Connections** : Flanged (TS EN 1092-2)
- Dimensions** : Acc. to TS 9809 & TS EN 558+A1
- Applications** : Flammable gases (Natural gas, LPG, LNG)



Part No / Name	Material
1-Body	JS 1049 (GGG-40.3)
2-End cap	JS 1049 (GGG-40.3)
3-Ball	1.4021/1.4086 St. Steel
4-Stem	1.4104 St. Steel
5-Seat Ring	PTFE
6-Packing Ring	PTFE
7-Thrust Washer	PTFE
8-Packing Gland	St.37
9-Belleville Washer	Ck70
10-Retaining Pin	St 37
11-Handle Nut	5
12-Handle	St 42
13-Stud Bolt	5.6
14-Nut	5
15-Cushion Plate	JL 1030 (GG-20)
16-Sealing Ring	PTFE
20- Security Washer	St 37

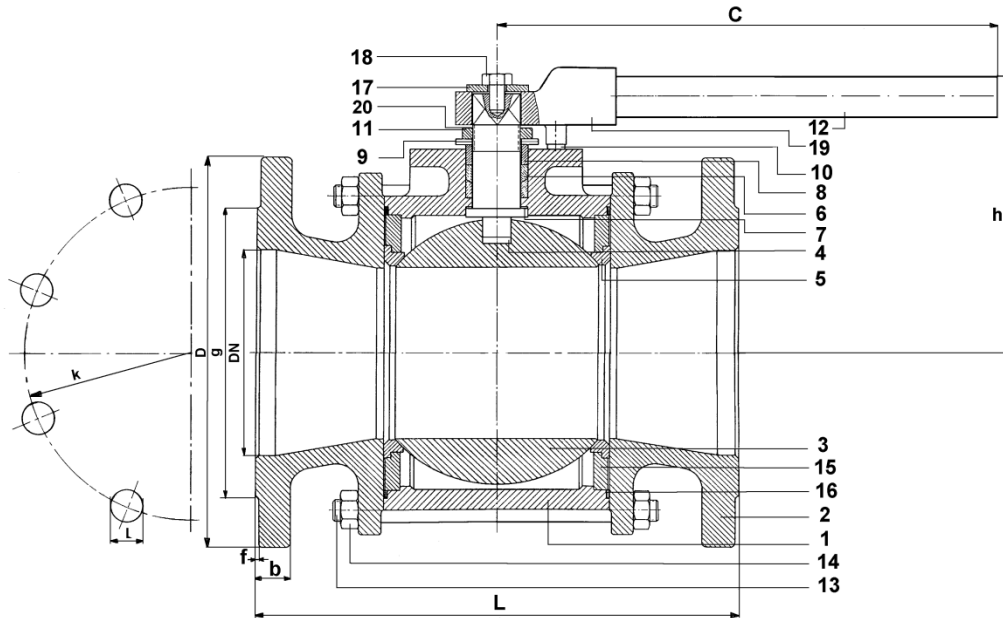
## REDUCED BORE - DIMENSIONS

Size	Dimensions			Flange dimensions								Weight
				PN40								
DN	L	h	c	D	b	k	l	n	g	f	Kg	
80/65	310	150	285	200	24	160	19	8	132	3	20	
100/80	350	178	410	235	24	190	23	8	156	3	33	
125/100	400	192	410	270	26	220	28	8	184	3	45	

# Ball Valves ( For flammable gases )



**Model** : VKV (Reduced bore)  
**Pressure rating** : PN25 (TS 9809)  
**Connections** : Flanged (TS EN 1092-2)  
**Dimensions** : Acc. to TS 9809 & TS EN 558+A1  
**Applications** : Flammable gases (Natural gas, LPG, LNG)



Part No / Name	Material
1-Body	JS 1049 (GGG-40.3)
2-End cap	JS 1049 (GGG-40.3)
3-Ball	1.4021/1.4086 St. Steel
4-Stem	1.4104 St. Steel
5-Seat Ring	PTFE
6-Packing Ring	PTFE
7-Thrust Washer	PTFE
8-Packing Gland	St.37
9-Belleisle Washer	Ck70
10-Retaining Pin	St 37
11-Handle Nut	5
12-Handle	St 42
13-Stud Bolt	5.6
14-Nut	5
15-Cushion Plate	JL 1030 (GG-20)
16-Sealing Ring	PTFE
17-Washer	St 37
18-Bolt	8.8
19-Handle adapter	JS 1049 (GGG-40.3)
20- Security Washer	St 37

## REDUCED BORE - DIMENSIONS

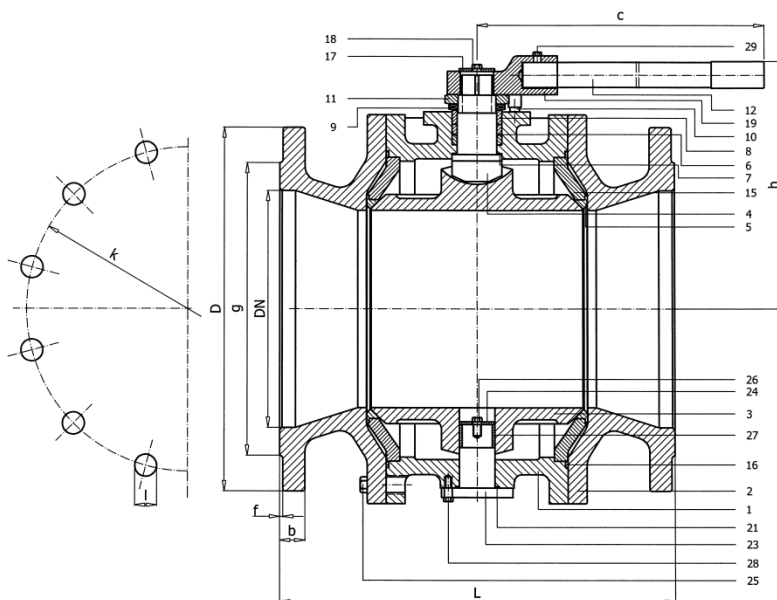
Size	Dimensions			Flange dimensions							Weight
				PN25							
DN	L	h	c	D	b	k	l	n	g	f	Kg
150/125	450	210	600	300	28	250	28	8	211	3	78
200/150	550	230	700	360	30	310	28	12	274	3	115
250/200	650	275	760	425	32	370	31	12	330	3	183



# Ball Valves ( For flammable gases )



- Model** : VKV (Reduced bore)
- Pressure rating** : PN25 (TS 9809)
- Connections** : Flanged (TS EN 1092-2)
- Dimensions** : Acc. to TS 9809 & TS EN 558+A1
- Applications** : Flammable gases (Natural gas, LPG, LNG)



Part No / Name	Material
1-Body (centre piece)	JS 1049 (GGG-40.3)
2-End cap	JS 1049 (GGG-40.3)
3-Ball	1.4021/1.4086 St. Steel
4-Stem	1.4301 St. Steel
5-Seat Ring	PTFE
6-Packing Ring	PTFE
7-Thrust Washer	PTFE
8-Packing Gland	St 37
9-Belleville Washer	Ck70
10-Retaining Pin	St 37
11-Handle Nut	5
12-Handle	St 42
15-Cushion Plate	JL 1030 (GG 20)
16-Sealing Ring	PTFE
17-Washer	St 37
18-Bolt	5.6
19-Handle Adapter	JS 1049 (GGG-40.3)
21-Gasket	PTFE
23-Lower bearing stem	St 42
24-Washer	St 37
25-Bolt	8.8
26-Bolt	5.6
27-Sleeve ring	PTFE
28-Bolt	5.6
29-Bolt	8.8

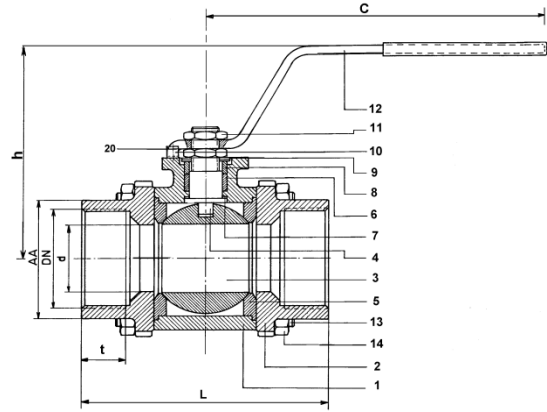
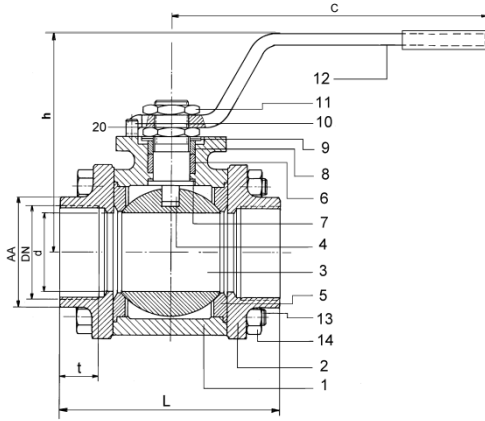
### REDUCED BORE - DIMENSIONS

Size	Dimensions			Flange dimensions							Weight
				PN25							
DN	L	h	c	D	b	k	l	n	g	f	Kg
300/250	750	315	1060	485	34	430	31	16	389	4	286

# Ball Valves ( For flammable gases )



**Model** : VKVm (Full & Reduced bore)  
**Pressure rating** : MOP 5-20 (\*) (1/2" – 2") (TS EN 331)  
**Connections** : Screwed (DIN 2999 BSP), DIN EN 10226-1  
**Dimensions** : Acc. to DIN 3202 - M3  
**Applications** : Flammable gases (Natural gas, LPG, LNG)



## FULL BORE - DIMENSIONS

Size	Dimensions			Flange dimensions			Weight
				PN40			
DN	L	h	c	AA	d	t	Kg
1/2"	75	85	135	27	15	15	0,75
3/4"	80	95	160	32	20	16	1,20
1"	90	100	160	41	25	19	1,60
1 1/4"	110	128	200	50	32	21	2,70
1 1/2"	120	135	200	56	40	21	3,80
2"	140	139	285	70	50	25	6,60

(\*)Valves from 1/2" to 2" have been designed acc. to PN40 rating, however they are limited to and marked as MOP5-20 acc. to TS-EN 331 standard.

## REDUCED BORE - DIMENSIONS

Size	Dimensions			Flange dimensions			Weight
				PN40			
DN	L	h	c	AA	d	t	Kg
3/4"/15	80	85	135	32	15	16	0,75
1"/20	90	95	160	41	20	19	1,15
1 1/4"/25	110	100	160	50	25	21	1,65
1 1/2"/32	120	128	200	55	32	21	2,40
2"/40	140	135	200	70	40	25	3,80

(\*)Valves from 1/2" to 2" have been designed acc. to PN40 rating, however they are limited to and marked as MOP5-20 acc. to TS-EN 331 standard.

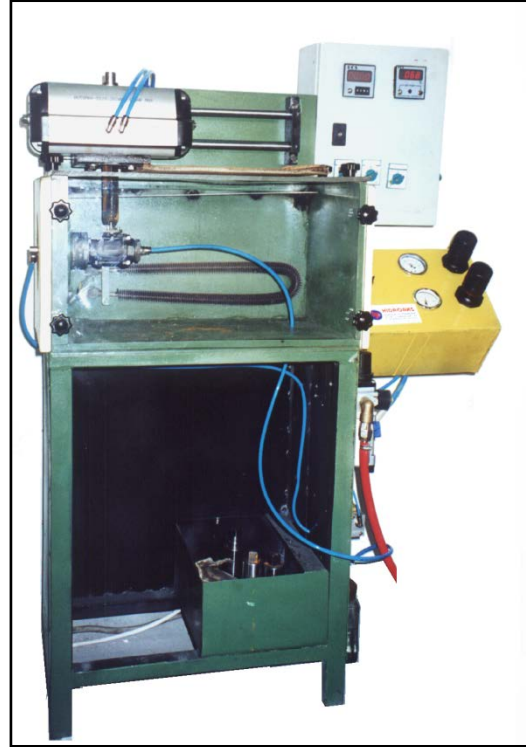
Part No / Name	Material
1-Body	JS 1049 (GGG-40.3)
2-End cap	JS 1049 (GGG-40.3)
3-Ball	1.4021/ 1.4086 /1.4301 St.Steel
4-Stem	1.4104 St. steel
5-Seat Ring	PTFE
6-Packing Ring	PTFE
7-Thrust Washer	PTFE
8-Packing Gland	St.37
9-Belleville Washer	Ck70
10-Retaining Pin	St 37
11-Handle Nut	5
12-Handle	St 42
13-Stud Bolt	5.6
14-Nut	5
20- Security Washer	St 37

(\*) DN 15-25: Ball material are AISI 304 St.Steel

**SPECIAL APPLICATIONS AND CERTIFICATES**



Pneumatic Actuated Ball Valves



Cycle Test Station

