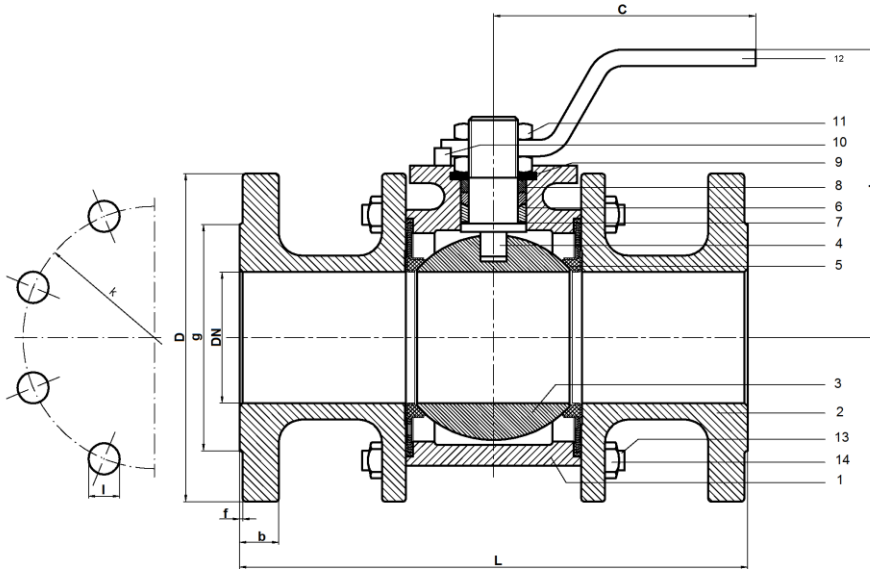


Ball Valves

- Model** : VKVt (Full bore) – w. SS spring loaded seat rings
- Pressure rating** : PN40
- Connection** : Flanged to TS ISO 7005-1, DIN EN 1092-1
- Dimensions** : According to EN 558-1
- Applications** : Chemicals, Food & Drink, Industrial fluids



Part no. / name	Material	
	Stainless Steel	Carbon steel
1 Body	1.4408 Cast Stainless steel	GSC-25 Cast steel
2 End cap	1.4408 Cast Stainless steel	GSC-25 Cast steel
3 Ball	1.4408 Cast Stainless steel	1.4086 Cast Stainless steel
4 Operating stem	AISI 316 Cast Stainless steel	1.4104 Stainless steel
5 Seat ring	PTFE+AISI 316 Stainless steel	PTFE+AISI 316 Stainless steel
6 Packing ring	PTFE	PTFE
7 Thrust washer	PTFE	PTFE
8 Packing gland	AISI 316 Stainless steel	St. 37
9 Spring washer	AISI 302 Stainless steel	Ck 70
10 Retaining pin	AISI 316 Stainless steel	St. 37
11 Handle nut	AISI 316 Stainless steel	5
12 Handle	St 42	St. 42
13 Stud bolt	AISI 304	5.6 / 8.8
14 Nut	AISI 304	5

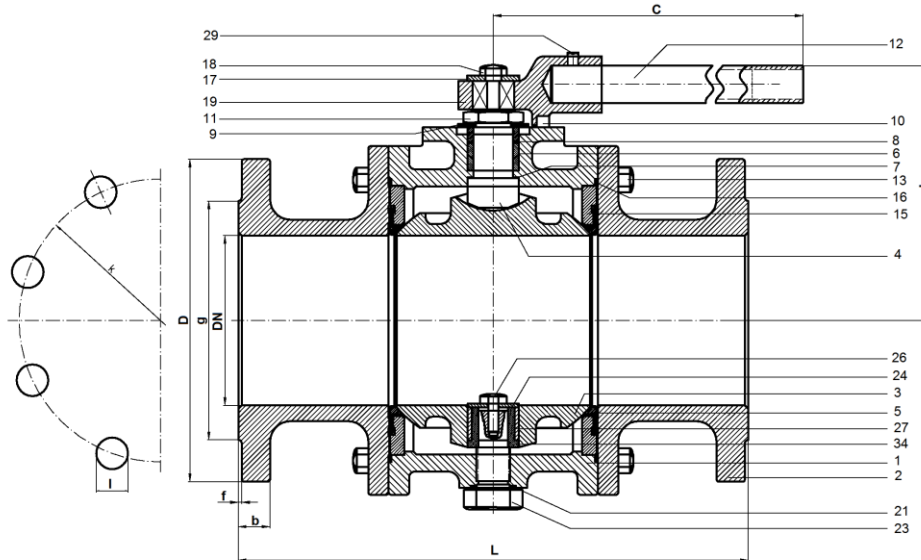
FULL BORE VALVE DIMENSIONS PN40

Size	Dimensions			Flange dimensions							Weight
				PN40							
DN	L	h	C	D	b	k	l	n	g	f	Kg
50	230	139	285	165	20	125	19	4	99	3	
65	290	150	285	185	22	145	19	8	118	3	
80	310	178	410	200	24	160	19	8	132	3	
100	350	192	410	235	24	190	23	8	156	3	
125	400	210	660	270	26	220	28	8	184	3	

Dimensions are in mm. We reserve the right to modify construction and material without notice.

Ball Valves

- Model** : VKVt (Full bore) – w. SS spring loaded seat rings
- Pressure rating** : PN40
- Connection** : Flanged to TS ISO 7005-1, DIN EN 1092-1
- Dimensions** : According to EN 558-1
- Applications** : Chemicals, Food & Drink, Industrial fluids



Part no. / name	Material	
	Stainless Steel	Carbon steel
1 Body	1.4408 Cast stainless steel	GSC-25 Cast steel
2 End cap	1.4408 Cast stainless steel	GSC-25 Cast steel
3 Ball	1.4408 Cast stainless steel	1.4086 Cast stainless steel
4 Operating stem	AISI 316 Stainless steel	1.4104 Stainless steel
5 Seat ring	PTFE + AISI 316 Stainless steel	PTFE + AISI 316 Stainless steel
6 Packing ring	PTFE	PTFE
7 Thrust washer	PTFE	PTFE
8 Packing gland	AISI 316 Stainless steel	St. 37
9 Spring washer	AISI 302 Stainless steel	Ck 70
10 Retaining pin	AISI 316 Stainless steel	St. 37
11 Handle nut	AISI 316 Stainless steel	5
12 Handle	St 42	St 42
13 Stud bolt / Nut	AISI 304 Stainless steel	8.8
15 Support ring	1.4408 Cast stainless steel	JL 1030 (GG-20)
16 Body seal	PTFE	PTFE
17 Washer	AISI 316 Stainless steel	St. 37
18 Bolt	AISI 304 Stainless steel	5.6
19 Handle adaptor	1.4408 Cast stainless steel	JS 1049 (GGG 40.3)
21 Gasket	PTFE	PTFE
23 Lower bearing stem	AISI 316 Stainless steel	St 42
24 Washer	AISI 316 Stainless steel	St. 37
26 Lower bearing bolt	AISI 316 Stainless steel	8.8
27 Sleeve ring	PTFE	PTFE
29 Bolt	AISI 304 Stainless steel	8.8
34 Lower bearing bush *	AISI 316 Stainless steel	St 37

FULL BORE VALVE DIMENSIONS PN40

Size	Dimensions			Flange dimensions							Weight
				PN40							
DN	L	h	C	D	b	k	l	n	g	f	Kg
150	450	230	695	300	28	250	28	8	211	3	
200	550	275	905	375	34	320	28	12	284	3	
250	650	315	1060	450	38	385	33	12	345	3	

* Available only for size DN 250
 Dimensions are in mm. We reserve the right to modify construction and material without notice.